

Registration

Two Easy Ways to Register

1. Visit www.ghostranch.org
2. Under COURSES & RETREATS, click on REGISTRATION.
3. Select the location for the course, Abiquiu or Santa Fe.
4. A form opens and you can register online. Credit card payment required.

2. 1. Visit www.ghostranch.org
2. Under COURSES & RETREATS, click on ONLINE CATALOG.
3. Find your course selection.
4. A PDF form can be found at the bottom of the course description.
5. Print the form. Fill out the information. Include check or credit card information.
6. Then, mail to:

Registrar
Ghost Ranch in Santa Fe
401 Old Taos Highway
Santa Fe, NM 87501
505.982.8539, ext. 223

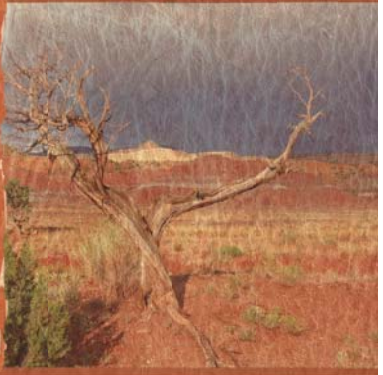
or

Registrar
Ghost Ranch in Abiquiu
HC77 Box 11
Abiquiu, NM 87510
505.685.4333 ext. 152

If you do not have internet access, please call the registrar and we will mail you a registration form.

GHOST RANCH
HC77/BOX 11, 87510
Abiquiu, NM
www.ghostranch.org

transformation
begins



Winter • Spring | 2009 • 2010



transformation

GHOST RANCH
la Resolana Series



Ghost Ranch has a long and rich history as an education and retreat center in the Southwest. We are excited about our new series of programming designed for easy access to the best of Ghost Ranch. La Resolana Series, an extension of our traditional summer programming, allows you to experience the brilliance of winter and the radiance of spring in the high desert. With shorter course periods Resolana classes fit comfortably into your busy schedule. And with the added benefit of lower air fares and gas prices during these seasons, we sincerely hope we've made it easier for you to visit Ghost Ranch.

In northern New Mexico villages, la Resolana is a space on the south side of a building - protected from the wind and warmed by the absorbed rays of the winter sun - where people gather to exchange news and share stories. It has been described as a place where the community comes together in dialogue and out of which a body of knowledge grows.

With this new series of programs, Ghost Ranch is affirming its mission to quality program throughout the year. For nine years, the Ghost Ranch education center in Santa Fe was called Plaza Resolana. The Resolana concept and the quality of education that promotes community dialogue as a foundation for learning is being honored with this new program series.

www.ghostranch.org

March 28-April 4, 2010
Holy Week in the Desert - a two part retreat G105411
The Rev. Peg Chamberlin, The Rev. Jay T. Rock
+++Price for the full week is \$650 per participant & includes both segments

March 28-31, 2010
A Time of Preparation—wind, fire, water & earth G105411a
+++\$300 per participant includes housing & meals at Casa del Sol
In preparation for Jesus' Passion and Resurrection, join in a communal time of prayer and reflection at Casa del Sol Spiritual Retreat House at Ghost Ranch. Each morning we will explore the themes of creation, liberation, emptiness and groundedness in Scripture and the teaching of the Desert Fathers and Mothers. Afternoons are free to enjoy Ghost Ranch.

March 31-April 4, 2010
A Journey into Easter: in the footsteps of Jesus—bread, pilgrimage, silence, Easter Vigil G105411b
+++\$410 per participant includes program, housing & meals
The pilgrimage begins on Wednesday evening with a celebratory meal. On Thursday, walk the stations of the cross in the bosque and celebrate the Maundy Thursday liturgy. On Good Friday, join in the Pilgrimage to Chimayó and join the Hermanos de Jesus (the Penitentes) in their prayers. Spend Holy Saturday in the Great Silence in contemplation with Jesus. Experience the Great Vigil of Easter at Christ in the Desert Monastery.

Santa Fe
October 18-24, 2009 S9A104
Digital Photography for Travelers
Capture your adventures by taking better photos while traveling. To enroll in this class you must already have a solid understanding of your camera's basic features and functions. Includes lectures and daily camera walks.
Hank Miller

January 18-22, 2010 S10H13
Marriage Enrichment for Clergy Couples
This is an opportunity for clergy couples to strengthen their relationships. Work on personal awareness and developing your own communication and connecting skills, with special attention on the unique challenges each couple faces.
James & Melissa Leshan

February 8-13, 2010 S10S22
A Workshop for the Hurried & Harried Pastor
This is a participatory seminar, structured around the Common Lectionary, intended to free the pastor from the weekly chore of bulletin preparation. We will contribute to a year's worth of bulletins that each participant will take home.
The Rev. Martin Askrum
The Rev. Art Sacoman

Abiquiu
September 21-25, 2009 G9C931
Ride the Ranch (beginning)
This is your ticket to a marvelous equestrian adventure in the magnificent splendor of Ghost Ranch in northern New Mexico. You will stay at the campground at the Ranch the first two nights, and take short rides and lessons from the wranglers to prepare for your journey.
Elisa Austell

Sept. 28-Oct. 3, 2009 G9C1011
Ride the Ranch (advanced)
This class begins and ends with stays at the campground at Ghost Ranch in Abiquiu. In between are three wonderful days and nights in the splendid "outback" exploring the 33 square miles of Ghost Ranch high desert.
Elisa Austell

November 4-8, 2009 G9H121
At the Core: Strength & Balance in a Stimulating World
Fine tune your overall well-being with this smorgasbord of fun and engaging workouts and activities including Pilates, willpower & grace™ and the high ropes challenge course.
Amy Godge, Joana Mendes

November 9-13, 2008 G9H121
Marriage Enrichment for Clergy Couples
A focused opportunity to strengthen a couple's relationship through an integrative experience employing a variety of tools which promote personal awareness and develop a couple's unique communication and connecting skills.
James & Melissa Leshan

November 12-16, 2009 G9CDS1121
The Wisdom of the Desert Mothers for Today's Spiritual Pilgrim
The ancient desert mothers, the Animas, have much to teach today's spiritual pilgrim. This retreat will explore the wisdom of the desert mothers and relate it to our own life and times.
Margaret Guelker

Nov. 16-21, 2009 G9R1131
A Workshop for the Hurried & Harried Pastor
This participatory seminar, structured around the Common Lectionary, is intended to free the pastor from the weekly chore of preparing the bulletin. We will contribute to a year's worth of bulletins that each participant will take home.
The Rev. Art Sacoman

Nov. 16-21, 2009 G9A1131
Clay Lanterns
Using locally harvested clay and pigments, create votive cups, Japanese-style lanterns, and a small oil lamp, finishing with a traditional pit firing using cedar wood.
Camille Trujillo

Dec. 29-Jan. 1, 2010 G9CDS1241
A New Year's Vigil for Peace
With the leadership provided by our friends and neighbors from differing communities of faith, join us for a time of reflection, silence, words of hope and comfort, a vision for a new time of peace, and worship that reflects our hope as a people. The time will end with worship and a breakfast meal shared together - our first in 2010.
Carole Landess, Rahmeh Lutz,
Nahum Wordiev

February 10-14, 2010 G10S32
Winter Magic of Ghost Ranch: Cross Country in the Enchanted Land
Enjoy the scenic beauty and snow of northern New Mexico from a pair of cross-country skis. Stay at Ghost Ranch in Abiquiu. Day trips will be taken to areas around northern New Mexico.
Elisa Austell, Willie Picaro

April 18-22, 2010 G418, 2010
Ride the Ranch (beginning)
This is your ticket to a marvelous equestrian adventure in the magnificent splendor of Ghost Ranch in northern New Mexico. You will stay at the campground at the Ranch the first two nights, and take short rides and lessons from the wranglers to prepare for your journey.
Elisa Austell

April 25-29, 2010 G425, 2010
Ride the Ranch (advanced)
This class begins and ends with stays at the campground at Ghost Ranch in Abiquiu. In between are three wonderful days and nights in the splendid "outback" exploring the 33 square miles of Ghost Ranch high desert.
Elisa Austell

Photos in this panel by Katharine Kimball.



October 18-24, 2009 S9A104
Digital Photography for Travelers
 \$775 (includes tuition, housing & most meals)
 Capture your adventures by taking better photos while traveling. To enroll in this class you must already have a solid understanding of your camera's basic features and functions. Includes lectures and daily camera walks.
 Hank Miller

January 2-16, 2010 S10S11
Cross Cultural Ministries
 \$1,500 (includes tuition, housing & most meals)
 Seminary students and pastors come for study, worship and theological reflection in one of the most unique multicultural settings in North America. Interact with religious leaders, families, community activists and congregations.
 Jose O'Leagues

January 18-22, 2010 S10H13
Marriage Enrichment for Clergy Couples
 \$750 per couple (includes tuition, housing & most meals)
 This is an opportunity for clergy couples to strengthen their relationships. Work on personal awareness and developing your own communication and connecting skills, with special attention on the unique challenges each couple face.
 James & Melissa Leehan

February 8-13, 2010 S10S22
A Workshop for the Hurried & Harried Pastor
 \$650 (includes tuition, housing & most meals)
 This is a participatory seminar, structured around the Common Lectionary, intended to free the pastor from the weekly chore of bulletin preparation. We will contribute to a year's worth of bulletins that each participant will take home.
 The Rev. Martin Ankrum
 The Rev. Art Seaman

February 21-26, 2010 S10S24a
Interim / Transitional Ministry Education - Week One
 \$775 (includes tuition, housing & most meals)
 Gain core information for the practice or management of interim ministry in the congregation or governing body. Week one is foundational for weeks two. Continuing education for Pastors.
 Edie Gause, Bill Lawser, Mary Wright

February 21-26, 2010 S10S24b
Interim / Transitional Ministry Education - Week Two
 \$775 (includes tuition, housing & most meals)
 Advanced training for the practice or management of interim ministry in the congregation or governing body. Prerequisite: Week One. Continuing education for Pastors.
 Edie Gause, Bill Lawser, Mary Wright

March 18-21, 2010 S10S33
Emotional & Spiritual Care in Disasters
 \$350 (includes tuition, housing & most meals)
 Disasters are a part of life. Whether you respond as a volunteer with an organization providing aid or just have to live through your own, this course can help. Learn how to cope with the emotional and spiritual stress that comes along with disasters.
 Robert Barnes

April 5-9, 2010 S10S41a
First Responder Ministry
 \$650 (includes tuition, housing & most meals)
 This class prepares interims or presbytery leaders for immediate, short-term service in churches experiencing traumatic loss or other stress. Prerequisites: presbytery recommendation, Interim Ministry Basic Education, transitional ministry service.
 Edie Gause, Andrew Short



April 5-9, 2010 S10S41b
Congregational Transformation & Transitional Ministry
 \$515 (includes tuition, housing & most meals)
 Explore the connection between interim/transitional ministry and transformational leadership development. Learn together how to maximize the interim time for the long term vitality of the congregation.
 Bill Lawser, Ann Philbrick

April 5-9, 2010 S10S41c
Stories at the Center: Setting the Inner Life in Motion
 \$515 (includes tuition, housing & most meals)
 Listen to a story as catalyst, followed by sharing of life and faith stories. A variety of spiritual practices will support awareness of our stories, including Lectio Divina, writing, art, yoga, and one period of solitary quiet.
 Jeannene Wiseman

April 11 - 17, 2010 S10WP42
It is no accident that every great teacher uses stories to pass on Truth. You can preach a sermon or recite a creed, but tell me a story, and I will remember! We will explore and discover the stories within us, stories only we can tell. Worship and reflection are a part of this pilgrimage.
 Ina Hughes



May 24-29, 2010 S10S54
Science Writers Workshop
 \$500 double; \$800 single (includes tuition, housing & most meals)
 A course for science writers who want to improve skills and meet colleagues, writers interested in science writing, public information specialists from universities and government labs and scientists who might like writing more than research.
 George Johnson, Sandra Blakeslee

May 30-June 14, 2010 S10S55
Cross Cultural Ministries
 \$1,500 (includes tuition, housing & most meals)
 Seminary students and pastors come for study, worship and theological reflection in one of the most unique multicultural settings in North America. Interact with religious leaders, families, community activists and congregations.

May 30-June 5, 2010 S10W55a
Personal Parables & Songs from the Heart
 \$775 (includes tuition, housing & most meals)
 Discover the stories that define who you are and what you know! Writers of all levels will explore their lives and their craft. The emphasis will be on making the writing evocative, imaginative, and worthy.
 Ina Hughes



May 30-June 5, 2010 S10W55b
Keep the Memoir Going
 \$775 (includes tuition, housing & most meals)
 For those who have started a memoir or are somewhere along in one, we'll work on strategies for exploring your theme and how to keep it to it. We'll include read and critique sessions. We also will discuss how to write intimately about people close to you.
 Thomas Larson

September 21-25, 2009 G9O931
Ride the Ranch (beginning)
 \$250 + \$400 housing & meals
 This is your ticket to a marvelous equestrian adventure in the magnificent splendor of Ghost Ranch in northern New Mexico. You will stay at the campground at the Ranch the first two nights, and take short rides and lessons from the wranglers to prepare for your journey.
 Elisa Austell

Sept. 28-Oct. 3, 2009 G9O1011
Ride the Ranch (advanced)
 \$350 + \$500 housing & meals
 This class begins and ends with stays at the campground at Ghost Ranch in Abiquiu. In between are three wonderful days and nights in the splendid "outback" exploring the 33 square miles of Ghost Ranch high desert.
 Elisa Austell

Oct. 28-Nov. 2, 2009 G9CDS1051
Creative Expressions for Dias de los Muertos
 \$370 + \$425 housing & meals
 Dias de los Muertos (Days of the Dead) is not a morbid time, but an occasion to "transcend" death. Join us to discover the history, whimsy and ritual of this Latin American holiday.
 Helen Byers

December 2-6, 2009 G9CDS1212
Entering into Advent's Night
 \$350 + \$410 housing & meals
 In this busy season, we will slow down and take time to listen for God's voice, exploring Scripture for insight and guidance.
 Nancy Copeland-Payton

Dec. 29, 2009-Jan. 1, 2010 G9CDS1241
A New Year's Vigil for Peace
 \$300 per person, \$500 per couple
 With the leadership provided by our friends and neighbors from differing communities of faith, join us for a time of reflection, silence, words of hope and comfort, a vision for a new time of peace, and worship that reflects our hope as a people. The time will end with worship and a breakfast meal shared together - our first in 2010.
 Carole Landess, Rahmah Lutz, Nahum Wardlaw

January 4-8, 2009 G9O1111
At the Core: Strength & Balance in a Stimulating World
 \$300 (includes special evening of spa time and dinner off the Ranch) + \$400 housing & meals
 Fine tune your overall well-being with this smorgasbord of fun and engaging workouts and activities including Pilates, willpower & grace™ and the high ropes challenge course.
 Amy Cadge, Joana Meneses

November 9-13, 2008 G9H1121
Marriage Enrichment for Clergy Couples
 \$400 per couple + \$400 housing & meals
 A focused opportunity to strengthen a couple's relationship through an integrative experience employing a variety of tools which promote personal awareness and develop a couple's unique communication and connecting skills.
 James & Melissa Leehan

November 12-16, 2009 G9CDS1121
The Wisdom of the Desert Mothers for Today's Spiritual Pilgrim
 \$200 (includes \$25 materials fee) + \$200 housing & meals at Casa del Sol
 The ancient desert mothers, the Ammas, have much to teach today's spiritual pilgrim. This retreat will explore the wisdom of the desert mothers and relate it to our own life and times.
 Margaret Guelker

January 4-27, 2010
January Term
 Experience three weeks of study or hands-on work at Ghost Ranch in Abiquiu or in Santa Fe. Enjoy free time with other students as you explore northern New Mexico, all while earning credit towards your degree.
 Visit ghost ranch.org for full course details.

November 16-21, 2009 G9R1131
A Workshop for the Hurried & Harried Pastor
 \$250 + \$500 housing & meals
 This participatory seminar, structured around the Common Lectionary, is intended to free the pastor from the weekly chore of preparing the bulletin. We will contribute to a year's worth of bulletins that each participant will take home.
 The Rev. Art Seaman

May 26 - 31, 2010 G10M541
Blue Grass at Ghost Ranch
 Imagine pickin' and playin' in the high desert. A full schedule of workshops and concerts is in the works, so save the date and we'll see you there.



November 16-21, 2009 G9A1131
Clay Lanterns
 \$175 (includes \$25 lab fee) + \$250 housing & meals
 Using locally harvested clay and pigments, create votive cups, Japanese-style lanterns, and a small oil lamp, finishing with a traditional pit firing using cedar wood.
 Camilla Trujillo

March 19-25, 2010 G10CD341
Exploring Your Spiritual Journey: A Contemplative Art Retreat
 \$270 (includes \$20 lab fee) + \$500 housing & meals
 Art is a perfect metaphor for the contemplative experience. Create drawings expressing your spiritual journey, trust your intuitive process and discover your heart-centered perspective in a safe, supportive environment.
 Suzanne Frazier

March 28-April 4, 2010 G10S351
Holy Week Retreat
 A two part retreat - join us for either separate or both - whichever fits into your schedule best. Full details in the gold box on the reverse side of this catalog.
 Peg Chamberlin, Jay Rock

April 5-11, 2010 G10CD5411
Come to Catch Your Breath: A Week of Post-Lenten Reflection & Renewal
 \$80/day overnight stay with meals, \$50/day if participant brings food, \$50 additional charge for spiritual direction per session
 Designed particularly for pastors after the hectic Lenten season, but others yearning for private retreat time are welcome. Morning and evening prayer will be offered. Days are unstructured with spacious time for rest and renewal as well as spiritual direction as requested.
 Anne Bateman Noss

April 7-11, 2010 G10O411
At the Core: Strength & Balance in a Stimulating World
 \$300 (includes special evening of spa time and dinner off the Ranch) + \$400 housing & meals
 Fine tune your overall well-being with this smorgasbord of fun and engaging workouts and activities including Pilates, willpower & grace™ and the high ropes challenge course.
 Amy Cadge, Joana Meneses

April 18-22, 2010 G418_10
Ride the Ranch (beginning)
 \$250 + \$400 housing & meals
 This is your ticket to a marvelous equestrian adventure in the magnificent splendor of Ghost Ranch in northern New Mexico. You will stay at the campground at the Ranch the first two nights, and take short rides and lessons from the wranglers to prepare for your journey.
 Elisa Austell

April 19-25, 2010 G10CD5431
Wholly Holy: Experiencing God through Body, Mind, Heart & Spirit
 \$250 + \$500 housing & meals at Casa del Sol
 Focus on different biblical stories through which Jesus invites us to live all aspects of our lives in a way that is "wholly holy"; "I came that you may have life, life in all its fullness."
 Linda Forsberg

April 25-29, 2010 G425_2010
Ride the Ranch (advanced)
 \$350 + \$500 housing & meals
 This class begins and ends with stays at the campground at Ghost Ranch in Abiquiu. In between are three wonderful days and nights in the splendid "outback" exploring the 33 square miles of Ghost Ranch high desert.
 Elisa Austell

May 3-9, 2010 G10A511
Watercolor, O'Keeffe, Ghost Ranch, and You (Plain Air)
 \$250 + housing & meals
 A special week to fill a sketchbook with drawings, then watercolor and value notes. A unique opportunity to gather images of Ghost Ranch landscapes, O'Keeffe's "back yard".
 Pamona Hallenbeck

May 3-9, 2010 G10A512
Micaceous Pottery - Big Pots!
 \$275 (includes \$25 lab fee) + housing & meals
 Explore traditional micaceous pottery using pinch pot, slab, and coil techniques. Using native clays and a traditional outdoor firing, we'll make a large pot and large figurine.
 Camilla Trujillo

May 10-15, 2010 G10S521
Lectio Terra - Sacred Reading of the Landscape
 \$250 + housing & meals
 This pilgrimage takes us into the landscape of Ghost Ranch, accompanied by the desert experience of Hagar, Moses, Ezekiel, Jesus, and others. We can help you add a 1 or 2 day private retreat before or after.
 Rev. Wallace Ford, Ken Culbertson

May 10-16, 2010 G10O521
Hiking Northern New Mexico
 \$280 (includes \$30 field trip fuel surcharge) + housing & meals
 Converse about plants, animals and environmental issues as you hike the beautiful canyons and mountains of the Ghost Ranch. Hike at least 7 miles a day over uneven terrain at high altitudes.
 Willie Picaro

May 10-16, 2010 G10CD5521
Art and Spirituality: Artworks as Partners in the Search for Meaning & Belonging
 \$250 + \$500 for housing & meals at Casa del Sol
 During this retreat we will explore ways of seeing and ways of talking about art. Consider the role that works of art may play in your spiritual life. This is a contemplative program, open to all, but helpful for pastoral workers, spiritual guides and religious education teacher.
 Wil H. Arts

May 10-16, 2010 G10A521
Pastels: Light & Color
 \$255 (includes \$5 lab fee) + housing & meals
 Capture the luminous light and color of Ghost Ranch as only pastel painting can. Learn principles of value, color, form and space, and how light affects each. Focus on the color palette of canyons, arroyos, creeks, and skies. Some hiking of up to 1/2 mile carrying supplies. All levels of experience welcome.
 Dianne Grammer

May 10-16, 2010 G10O522
Birds of Ghost Ranch
 \$265 (includes \$15 field trip fuel surcharge) + housing & meals
 Observe and learn about the more than 100 species of birds around Ghost Ranch. Requires all-day field trips away from the Ranch, with relaxed walking.
 Steven Cox

May 31-June 6, 2010 G10CD5541
Open Heart, Peaceful Mind - A Retreat for Rest & Reflection
 \$250 + \$500 housing & meals
 Slow down and relax into this nourishing retreat of gentle Kundalini Yoga, Buddhist-inspired sitting, walking and eating meditation, guided deep relaxation, small group discussion, as well as sharing poetry, laughter and chanting.
 Valerie Brown

Designates courses in the Resolana Series.

Designates courses that are part of the Casa del Sol community.